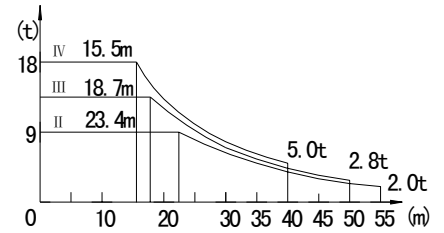




## Load Chart

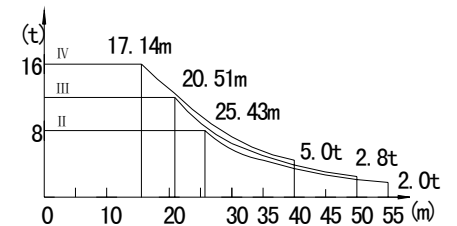
18t

R (m)	Fall	R(C <sub>max</sub> ) (m)	C <sub>max</sub> (t)	15	20	25	30	35	40	45	50	55
55	☺	23.4	9.00	9.00	9.00	8.20	6.33	4.97	3.95	3.15	2.52	<b>2.00</b>
	☹	26.3	9.00	9.00	9.00	9.00	7.46	5.90	4.73	3.82	<b>3.10</b>	
50	☺	18.7	13.50	13.50	12.39	9.19	7.06	5.54	4.40	3.51	<b>2.80</b>	
	☹	27.8	9.00	9.00	9.00	9.00	7.90	6.31	5.12	<b>4.20</b>		
45	☺	19.3	13.50	13.50	12.31	9.70	7.53	5.97	4.80	<b>3.90</b>		
	☹	26.9	9.00	9.00	9.00	9.00	7.75	6.18	<b>5.00</b>			
40	☺	19.9	13.50	13.50	13.51	10.19	7.97	6.38	<b>5.20</b>			
	☹	15.5	18.00	18.00	13.26	9.96	7.75	6.18	<b>5.00</b>			
35	☺	27.2	9.00	9.00	9.00	9.00	7.95	<b>6.40</b>				
	☹	20.1	13.50	13.50	13.50	10.34	8.16	<b>6.60</b>				
30	☺	15.5	18.00	18.00	13.37	10.12	7.95	<b>6.40</b>				
	☹	28.3	9.00	9.00	9.00	9.00	<b>8.40</b>					
30	☺	20.7	13.50	13.50	13.50	10.81	<b>8.60</b>					
	☹	16.0	18.00	18.00	13.91	10.60	<b>8.40</b>					

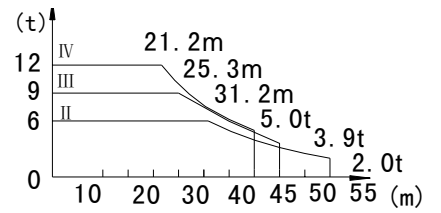


16t

R (m)	Fall	R(C <sub>max</sub> ) (m)	C <sub>max</sub> (t)	15	20	25	30	35	40	45	50	55
55	☺	25.43	8.00	8.00	8.00	8.00	6.33	4.97	3.95	3.15	2.52	<b>2.00</b>
	☹	28.52	8.00	8.00	8.00	8.00	7.46	5.90	4.73	3.82	<b>3.10</b>	
50	☺	20.51	12.00	12.00	12.00	9.19	7.06	5.54	4.40	3.51	<b>2.80</b>	
	☹	29.77	8.00	8.00	8.00	8.00	7.90	6.31	5.12	<b>4.20</b>		
45	☺	20.55	12.00	12.00	12.00	9.70	7.53	5.97	4.80	<b>3.90</b>		
	☹	29.30	9.00	9.00	9.00	9.00	7.75	6.18	<b>5.00</b>			
40	☺	21.98	12.00	12.00	12.00	10.19	7.97	6.38	<b>5.20</b>			
	☹	17.14	16.00	16.00	13.26	9.96	7.75	6.18	<b>5.00</b>			
35	☺	29.85	8.00	8.00	8.00	8.00	7.95	<b>6.40</b>				
	☹	22.20	12.00	12.00	12.00	10.34	8.16	<b>6.60</b>				
30	☺	17.19	16.00	16.00	13.37	10.12	7.95	<b>6.40</b>				
	☹	30.00	8.00	8.00	8.00	8.00	<b>8.00</b>					
30	☺	22.93	12.00	12.00	12.00	10.81	<b>8.60</b>					
	☹	17.75	16.00	16.00	13.91	10.60	<b>8.40</b>					



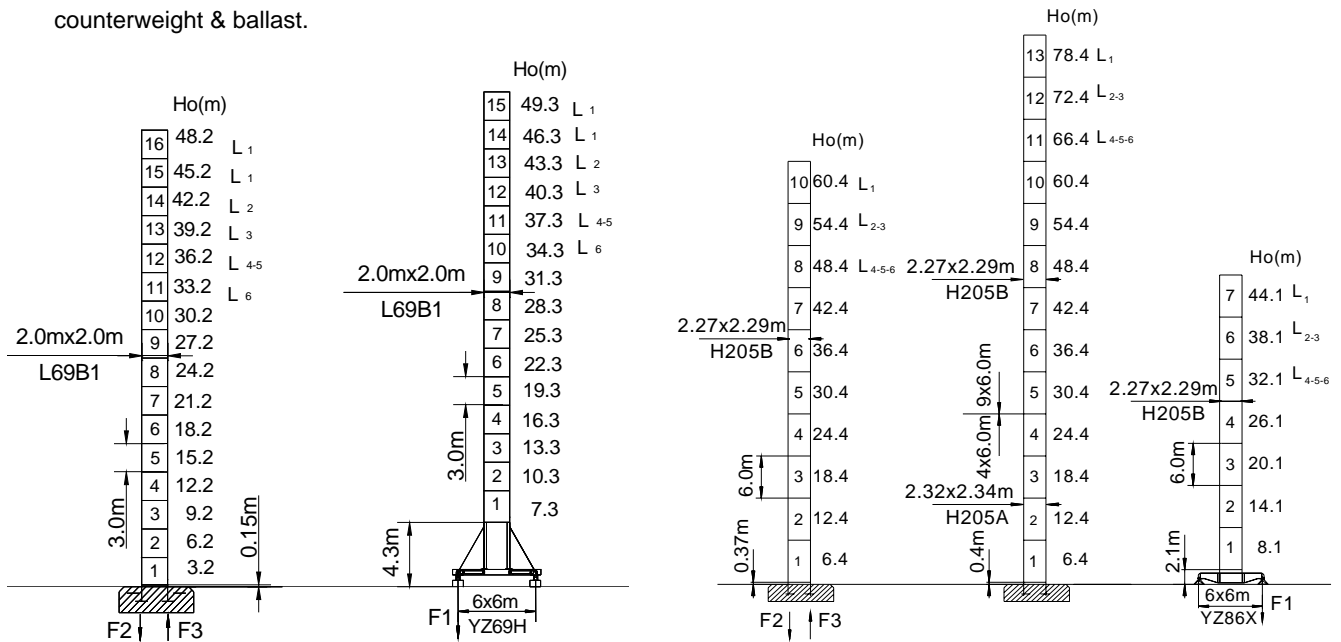
R (m)	Fall	R(C <sub>max</sub> ) (m)	C <sub>max</sub> (t)	15	20	25	30	35	40	45	50	55
55		31.2	6.00	6.00	6.00	6.00	6.00	4.97	3.95	3.15	2.52	<b>2.00</b>
50		34.6	6.00	6.00	6.00	6.00	6.00	5.90	4.73	3.82	<b>3.10</b>	
		25.3	9.00	9.00	9.00	9.00	7.06	5.54	4.40	3.51	<b>2.80</b>	
45		36.4	6.00	6.00	6.00	6.00	6.00	6.00	5.12	<b>4.20</b>		
		26.5	9.00	9.00	9.00	9.00	7.53	5.97	4.80	<b>3.90</b>		
40		35.7	6.00	6.00	6.00	6.00	6.00	6.00	<b>5.00</b>			
		27.5	9.00	9.00	9.00	9.00	7.97	6.38	<b>5.20</b>			
		21.7	12.00	12.00	12.00	9.96	7.75	6.18	<b>5.00</b>			
35		35.0	6.00	6.00	6.00	6.00	6.00	<b>6.00</b>				
		26.5	9.00	9.00	9.00	9.00	8.16	<b>6.60</b>				
30		21.7	12.00	12.00	12.00	10.12	7.95	<b>6.40</b>				
		30.0	6.00	6.00	6.00	6.00	<b>6.00</b>					
30		27.2	9.00	9.00	9.00	9.00	<b>8.60</b>					
		21.8	12.00	12.00	12.00	10.60	<b>8.40</b>					



● Reaction in service

■ Reaction out of service

⊕ Total weight for free standing crane without counterweight & ballast.

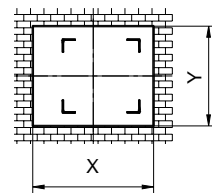
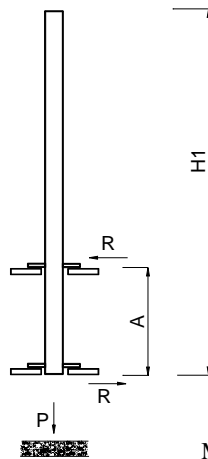
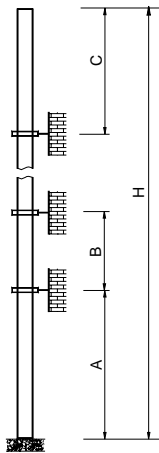


	●	■
F2	194t	223t
F3	143t	194t
⊕	78.5t	

	●	■
F1	104t	105t
⊕	92.5t	

	●	■
F2	208t	293t
F3	141t	239t
⊕	99t	

	●	■
F1	105t	106t
⊕	102t	






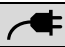
Min.installation dimension of elevator shaft

Mast	Jib length	A (m)	B (m)	C (m)	H (m)
H205B	L1-2-3	30/48	26	32	160m
	L4-5	30/42	24	30	>160m*
	L6	30/42	22	28	
L69B1	L1	41	35	42	153m >153m*
	L2	35	29	36	
	L3	32	26	33	
	L4-5	29	23	30	
	L6	26	20	27	

Mast	Jib length	H1 (m)	A (m)	P (t)	R (t)
H205B	L1	60	18	115	※
	L2-3	54		111	※
	L4-5-6	48		107	※
L69B1	L1	49.5	12-15	100	41.5
	L2-3	43.5	12-15	99	41.5
	L4-5	40.5	12-15	96	41.5
	L6	37.5	12-15	95	41.5

### Main Specifications

Mechanism		●●		●●●		●●●			Motor kW	
		m/min	t	m/min	t	m/min	t			
▲▼	18t	75LFV45DB1	0-40	9.0	0-26	13.5	0-20	18.0	1030m >1030m *	75
			0-96	3.0	0-64	4.5	0-48	6.0		
			0-160	1.0	0-106	1.5	0-80	2.0		
	16t	75LFV45B	0-38	9.0	0-25	13.5	0-19	18.0	550m >550m*	75
			0-46	6.0	0-30	9.0	0-23	12.0		
			0-76	3.0	0-50	4.5	0-38	6.0		
12t	75LFV40	0-47	8.0	0-31	12.0	0-24	16.0	550m >550m*	75	
		0-57	6.0	0-37	9.0	0-28	12.0			
		0-95	3.0	0-63	4.5	0-47	6.0			
12t	55LFV30	0-44	6.0	0-30	9.0	0-22	12.0	630m >630m*	55	
		0-53	4.0	0-40	6.0	0-27	8.0			
		0-88	1.7	0-60	2.6	0-44	3.5			
▲	45DFV40B	15°-85° 2.0min						45		
	5RFCV	0-0.7 rpm						2x120 N·m		
	RTC240	0-0.7 rpm						2x120 N·m		
	RT1	8-16 m/min						4x 2.6/5.2		

		kVA	
380V (±5%)	50 Hz / 60 Hz	75LFV45DB1: 210	75LFV45B 75LFV40: 185
		55LFV30/55LFV30B: 155	