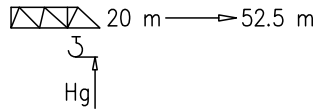


Power Control ASsys ACsys

CE FEM 1.001 - A4
EN 14439 - C25 - D25

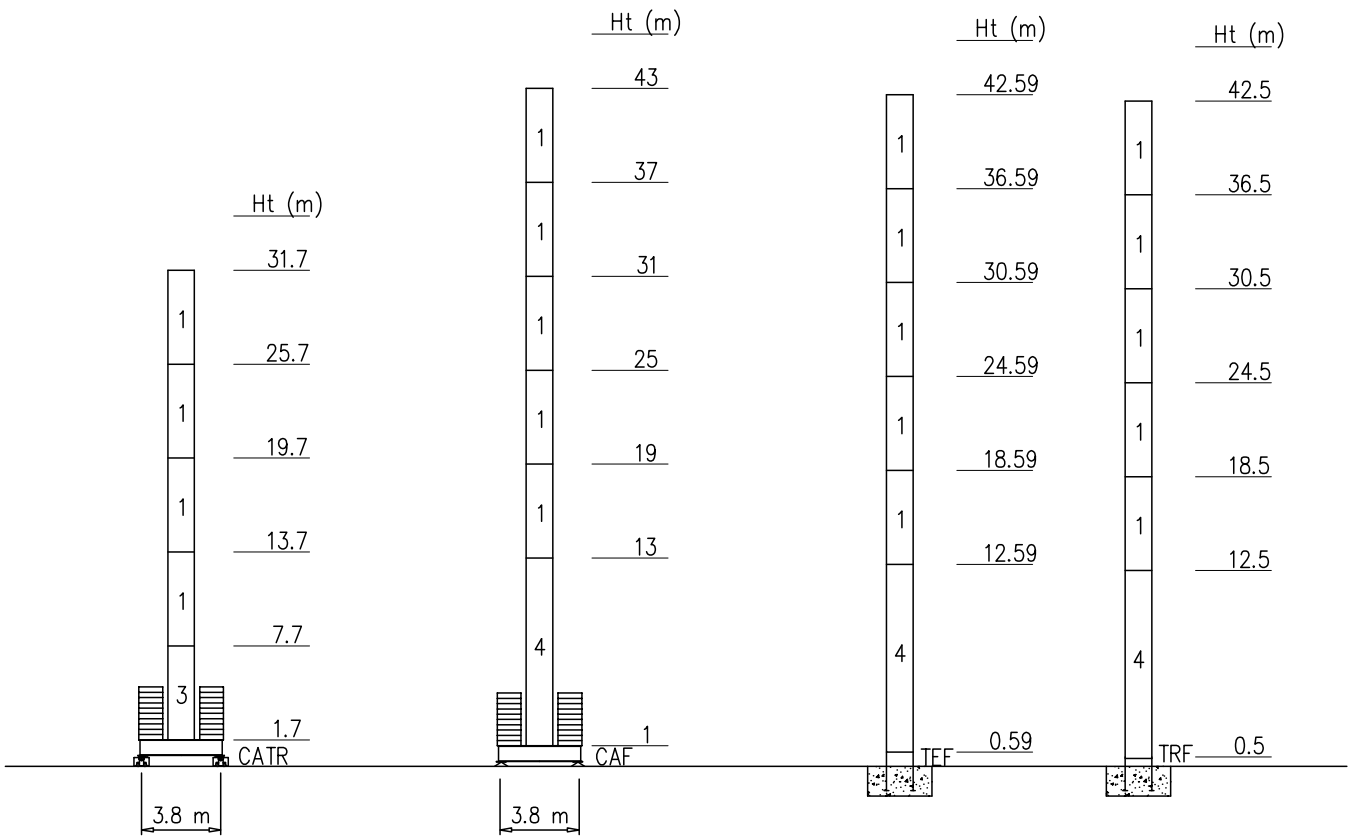
Torre/Reazioni - Masts/Reactions - Mat/Réactions - Maste/Eckdrücke - Mástil/Reacciones - Tramo/Reacções

SG1200 FEM

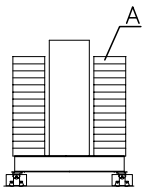


- Hg=Ht-1 m
- Hg=Ht-1.8 m

4	B0120	2/3
3	B0060	2/3
2	ST030	3/3
1	ST060	3/3

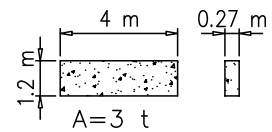


Peso zavorra - Ballast weight - Poids du lest - Ballastgewicht - Peso de lastre



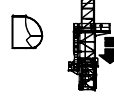
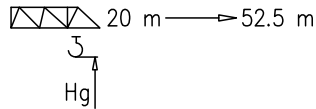
SG1200	
H-CATR38 (m)	31.7
FEM (t)	60
n°	20xA

SG1200	
H-CAF38 (m)	25 37 42
FEM (t)	54 60 72
n°	18xA 20xA 24xA



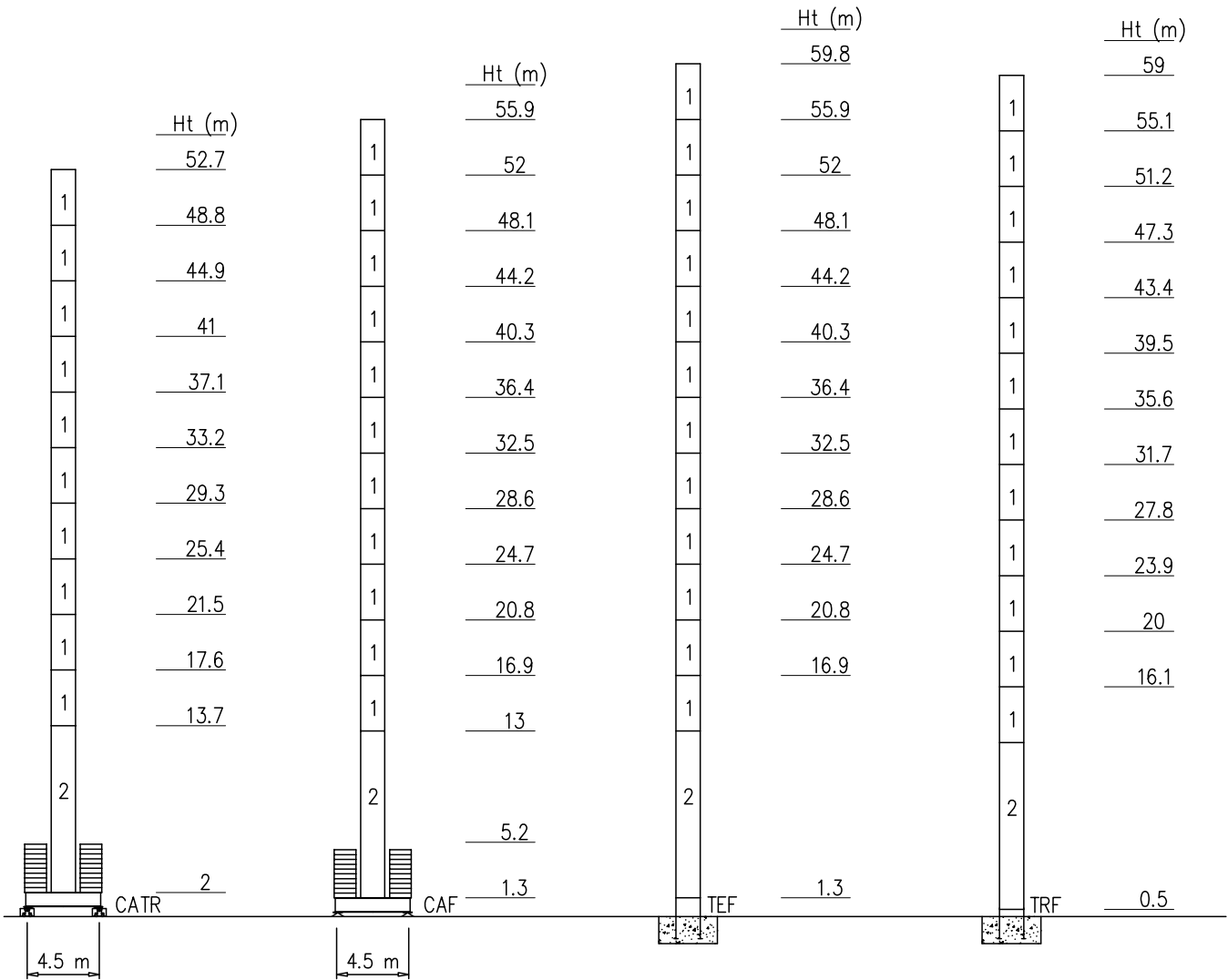
Torre/Reazioni – Masts/Reactions – Mat/Réactions – Maste/Eckdrücke – Mástil/Reacciones – Tramo/Reacções

SK1700 FEM

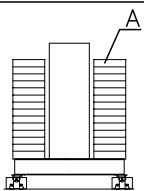


4	BPF039	4/4
3	ST117	2/2
2	BAF117	4/2
1	ST039	2/2

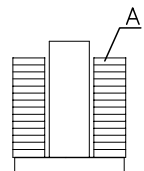
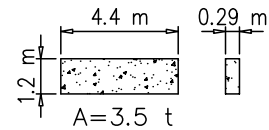
○ Hg=Ht-1 m
 □ Hg=Ht-1.8 m



Peso zavorra – Ballast weight – Poids du lest – Ballastgewicht – Peso de lastre



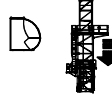
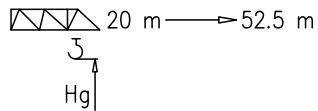
SK1700		
H-CATR (m)	48.8	52.7
FEM (t)	105	126
n°	30xA	36xA



SK1700									
H-CAF (m)	24.7	28.6	32.5	36.4	40.3	44.2	48.1	52	55.9
FEM (t)	63	63	63	63	77	84	105	126	126
n°	18xA	18xA	18xA	18xA	22xA	24xA	30xA	36xA	36xA

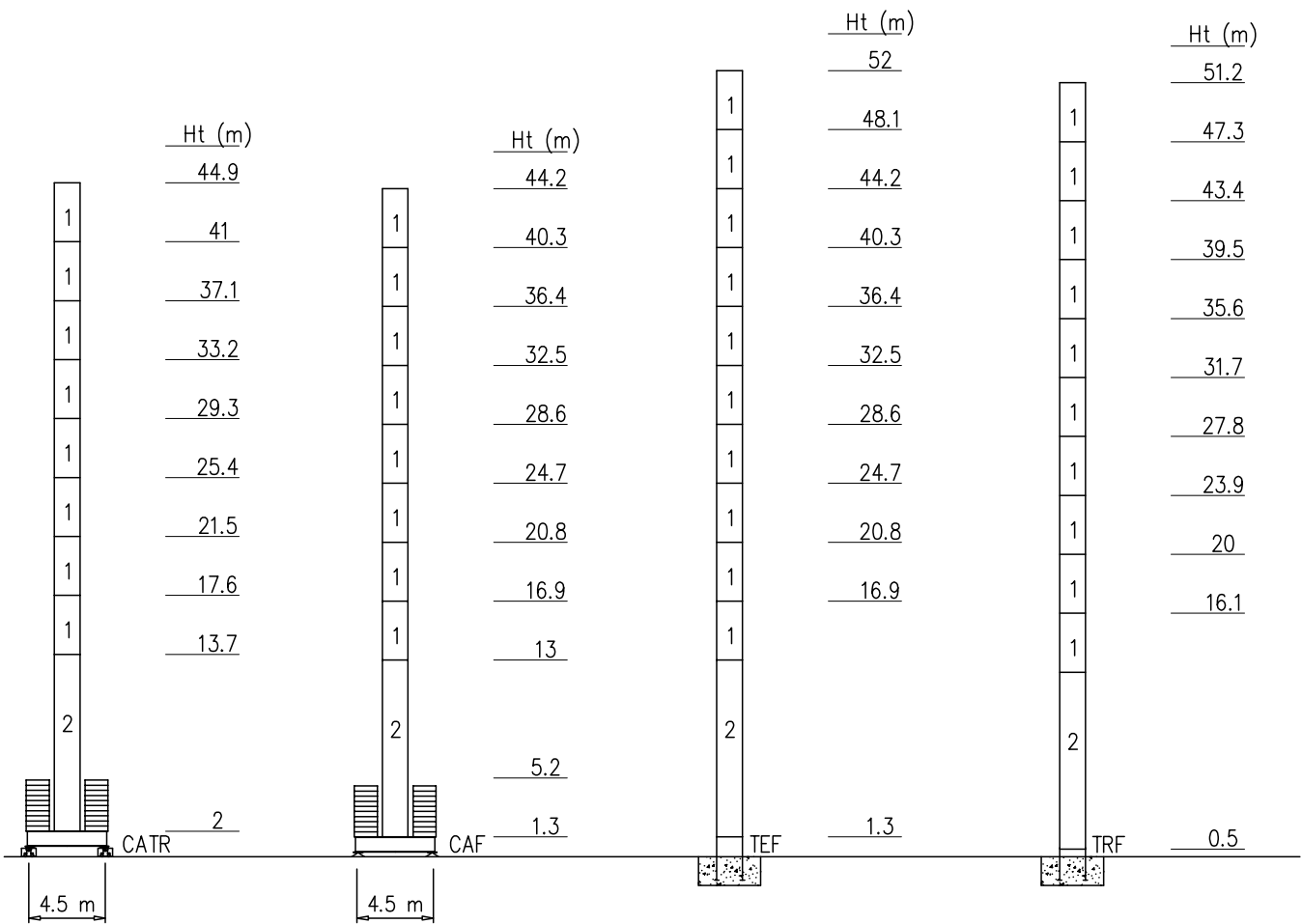
Torre/Reazioni – Masts/Reactions – Mat/Réactions – Maste/Eckdrücke – Măstil/Reacciones – Tramo/Reacções

SK1700 EN14439-D25

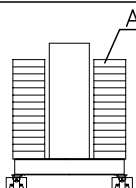


4	BPF039	4/4
3	ST117	2/2
2	BAF117	4/2
1	ST039	2/2

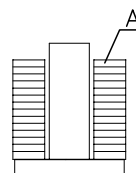
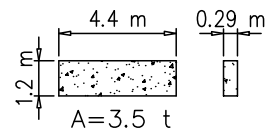
- Hg=Ht-1 m
- Hg=Ht-1.8 m



Peso zavorra – Ballast weight – Poids du lest – Ballastgewicht – Peso de lastre



SK1700	
H-CATR (m)	44.9
(t)	126
n°	36xA



SK1700						
H-CAF (m)	24.7	28.6	32.5	36.4	40.3	44.2
(t)	63	63	63	77	105	126
n°	18xA	18xA	18xA	22xA	30xA	36xA

Curve di carico – Courbes de charges – Load diagrams – LastKurven – Curvas de cargas

Pmax 3000 kg

	14400 kg		52.5 m	2	23.4	25	27.5	30	32.5	35	37.5	40	42.5	45	47.5	50	52.5	m
				3000	3000	2950	2650	2370	2150	1970	1810	1660	1530	1420	1310	1220	1000	kg
	14400 kg		50 m	2			26.4	30	32.5	35	37.5	40	42.5	45	47.5	50		m
				3000			3000	2700	2450	2230	2040	1875	1730	1600	1485	1300		kg
	14400 kg		45 m	2				27.6	32.5	35	37.5	40	42.5	45				m
				3000				3000	2600	2370	2170	2000	1820	1600				kg
	14400 kg		40 m	2				29	32.5	35	37.5	40						m
				3000				3000	2790	2540	2250	2000						kg
	14400 kg		35 m	2					31.1	35								m
				3000					3000	2600								kg
	13200 kg		30 m	2					30									m
				3000					3000									kg
	12000 kg		25 m	2						25								m
				3000						3000								kg
	8400 kg		20 m	2						20								m
				3000						3000								kg






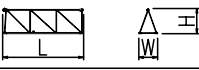
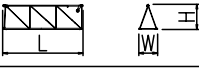
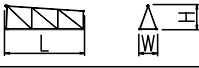
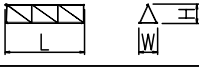
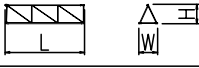
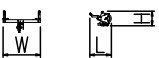
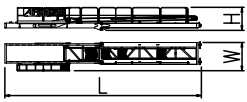


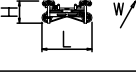
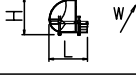
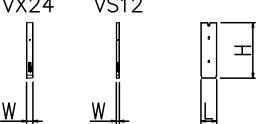


Pmax 6000/3000 kg


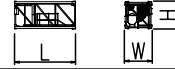
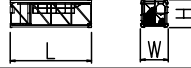



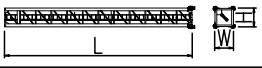
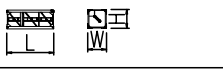
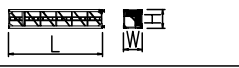
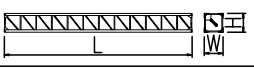






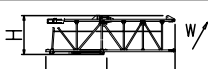
	14400 kg		52.5 m	2	13.7	15	17.5	20	22.5	25	27.5	30	32.5	35	37.5	40	42.5	45	47.5	50	52.5	m
				6000	6000	5300	4450	3840	3300	2950	2650	2370	2150	1970	1810	1660	1530	1420	1310	1220	1000	kg
	14400 kg		50 m	2		15.3	17.5	20	22.5	25	27.5	30	32.5	35	37.5	40	42.5	45	47.5	50		m
				6000		6000	5075	4350	3810	3360	3000	2700	2450	2230	2040	1875	1730	1600	1485	1300		kg
	14400 kg		45 m	2		15.8	17.5	20	22.5	25	27.5	30	32.5	35	37.5	40	42.5	45				m
				6000		6000	5350	4600	4050	3550	3190	2870	2600	2370	2170	2000	1820	1600				kg
	14400 kg		40 m	2		16.5	20	22.5	25	27.5	30	32.5	35	37.5	40							m
				6000		6000	4900	4300	3800	3410	3070	2790	2540	2250	2000							kg
	14400 kg		35 m	2		17.5	20	22.5	25	27.5	30	32.5	35									m
				6000		6000	5380	4700	4000	3650	3220	3000	2600									kg
	13200 kg		30 m	2		18.2	20	22.5	25	27.5	30											m
				6000		6000	5690	4970	4200	3740	3300											kg
	12000 kg		25 m	2			17.7	22.5	25													m
				6000			6000	5280	4300													kg
	8400 kg		20 m	2		15.1	20															m
				6000		6000	4300															kg



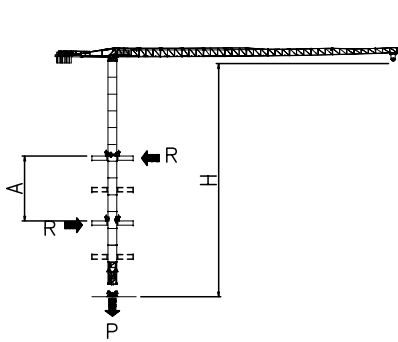
PESI E INGOMBRI – PACKING LIST – LISTE DE COLISAGE – GEWICHT UND ABMESSUNGEN

Denominazione Description	Disegno Draw	Pezzi Pieces	Dimensioni-Dimensions (mm)			Peso-Weight (kg)		
			L	W	H	Unit	Total	
Elemento di braccio Jib element Elément deèche Elemento de flecha	n°10 	1	5500	1480	2290	1250	–	
	n°9 	1	5260	1200	2150	880	–	
	n°8 	1	5240	1200	2100	700	–	
	n°7 	1	5225	1200	2060	635	–	
	n°6 	1	5200	1200	1630	500	–	
	n°5 	1	5160	1200	1630	370	–	
	n°4 	1	5140	1200	1610	350	–	
	n°3 	1	5110	1200	1610	250	–	
	n°2 	1	5090	1200	1260	210	–	
	n°1 	1	5090	1200	1260	200	–	
	Punta braccio 	1	700	1200	500	55	–	
Controbraccio completo Complete counterjib Contreflèche complète Contraflecha completa		1	10660	1750	1480	2100	–	
Gruppo girevole Slewing group Table tournante Grupo giratorio	SK1700 	1	2300	1810	2900	5900	–	
	S1200 	1	2450	1810	2900	3500	–	
Carrello Trolley Chariot Carretilla	P6 	1	1600	1620	710	320	–	
Ballatoio con cabina Access balcony with cabin Porte cabine Balcòn corrido con cabina		1	2500	2150	2450	1000	–	
Blocchi contrappeso Counterweight block Contre-poids Bloques de contrapeso	VX24 VS12 	VS12	2	1000	200	2500	1200	2400
		VX24	5	1000	400	2500	2400	12000

PESI E INGOMBRI – PACKING LIST – LISTE DE COLISAGE – GEWICHT UND ABMESSUNGEN

Denominazione Description	Disegno Draw	Pezzi Pieces	Dimensioni-Dimensions (mm)			Peso-Weight (kg)		
			L	W	H	Unit	Total	
Elemento di torre Mast element Elément de mature Elemento de torre	BAF117 	SK1700	–	11700	1785	1785	4690	–
	ST039 BPF039 	SK1700	–	3900	1785	1785	1750 2350	–
	ST052 	SK1700	–	5200	1785	1785	2250	–
	ST117 	SK1700	–	11700	1785	1785	4690	–
	BL060 	SG1200	–	6000	1440	1440	2162	–
	B0060 	SG1200	–	6000	1440	1440	2035	–
	B0120 	SG1200	–	12000	1440	1440	3670	–
	ST030 	SG1200	–	3000	1200	1200	934	–
	ST060 	SG1200	–	6000	1200	1200	1635	–
	ST120 	SG1200	–	12000	1200	1200	3060	–
Carro di base Base carriage Chassis de base Cruceta de base		3.8x3.8	1	5700	520	660	2280	2280
		4.5x4.5	1	6670	500	1260	3180	3180
		3.8x3.8	2	2700	340	660	1090	2180
		4.5x4.5	2	3100	500	1260	1400	2800
Elemento a perdere Disposable frame Chassis a perdre Bastidor desechable		SG1200	1	1990	1440	1440	1150	–
		SK1700	1	1840	1910	1910	1430	–
Elemento recuperabile Recoverable frame Chassis récupérable Bastidor recuperable		SG1200	1	600	1740	1740	940	–
		SK1700	1	1300	2170	2170	1720	–
Bogie di traslazione Driven bogie Boggie motorisée Balancin de traslaciòn			4	1160	700	600	700	2800
Blocco zavorra di base Base ballast block Lest de base Bloque de lastre		3.8x3.8	–	4000	1200	270	3000	–
		4.5x4.5	–	4400	1200	290	3500	–
Corsoio di montaggio Climbing cage Cage de montage Jaula de montaje		SG1200	1	8300	1600	1500	3000	–
		SK1700	1	8300	2600	2500	6000	–

GRU IN CAVEDIO – TELESCOPAGE SUR DALLES – CLIMBING CRANE – KLETTERKRANE IM GEBAUDE



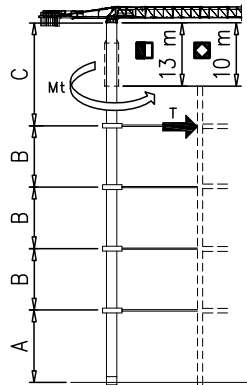
SK1700	H (m)	A (m)
	39	Min 9
Apertura passaggio gru Opening for crane passing 		Max 12

SG1200	H (m)	A (m)
	30	Min 6
Apertura passaggio gru Opening for crane passing 		Max 9

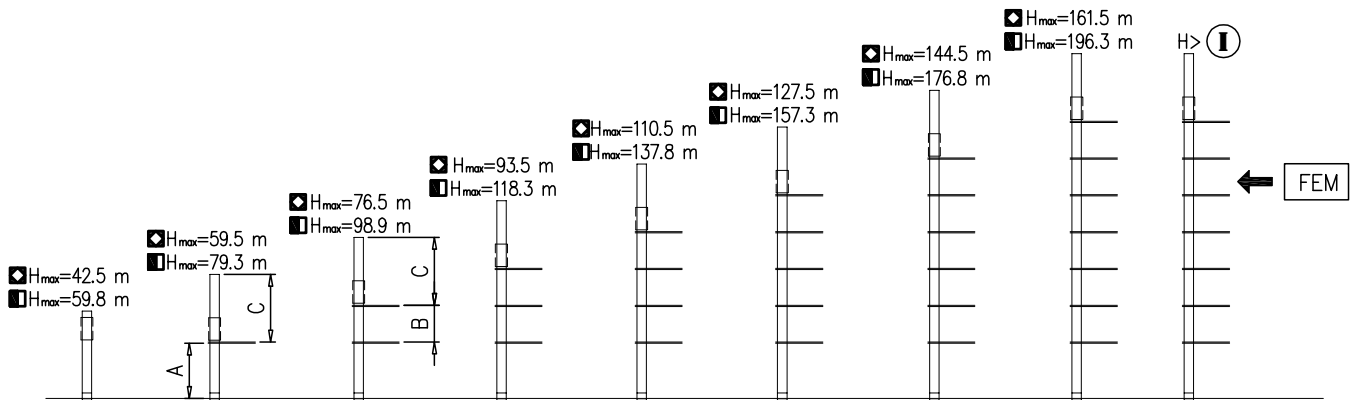
SOPRALZO IDRAULICO – TELESCOPABLE – EXTERNAL CLIMBING – KLETTERKRANE

FEM

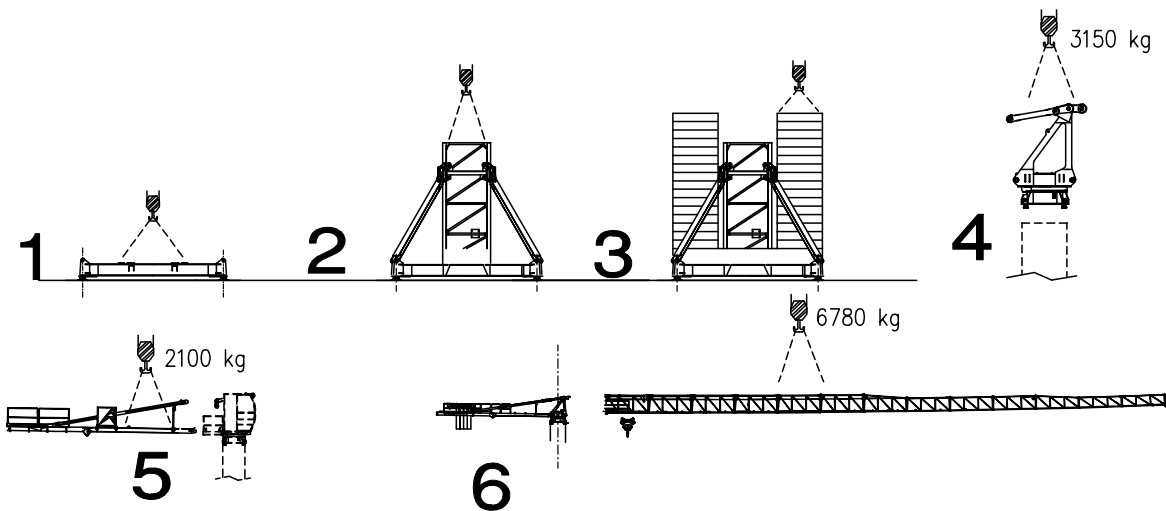
	SK1700
MAX C	32.5 m
B	19.5 m
A	46.8 m



	SG1200
MAX C	27 m
B	17 m
A	32.5 m



Montaggio – Montage – Erection – Montage – Montaje – Montagem



Meccanismi – Mechanisms – Mécanismes – Antriebe – Mecanismos

Sollevamento V25.60 Hoisting Levage Heben Elevaciòn Elevaçao														V25.60
	m/min	7	18	28	42	56	65	3.5	9	14	21	28	32.5	18.4 kW
	t	3	3	3	2.25	1.5	0.9	6	6	6	4.5	3	1.8	37 kVA
														172 m 344 m (L)
Sollevamento V33.90 Hoisting Levage Heben Elevaciòn Elevaçao														V33.90
	m/min	3	18	34	54	70	90	1.5	9	17	27	35	45	22 kW
	t	3	3	3	1.8	1.3	0.5	6	6	6	3.6	2.6	1	47 kVA
														380 m 760 m (L)
Sollevamento V45.120 Hoisting Levage Heben Elevaciòn Elevaçao														V45.120
	m/min	4	18	40	64	90	120							33 kW
	t	3	3	3	1.9	1.1	0.6							57 kVA
	m/min	2	9	20	32	45	60							340 m 680 m (L)
	t	6	6	6	3.8	2.2	1.2							
Carrello Trolleying Distribution Katzfahren Distribuciòn Distribuiçao			0 → 55	m/min	3 kW	Potenza elettrica necessaria Puissance électrique nécessaire Necessary electric power Anschlusswert – Potencia								
Rotazione Slewing Orientation Schwenken Orientaciòn Rotaçao			0 → 0,9	giri/min tr/min rp/min	4.4 kW @ 1200rpm n° 2 x 2.2 kW									
Traslazione Travelling Translation Kranfahren Traslaciòn Traslaçao			0 → 20	m/min	3.7 kW									

Rete elettrica – Réseau – Mains supply – Netzstrom – Red – Rede electrica 400V – 50 Hz

FEM 1.001 – A4
EN 14439 – C25 – D25